

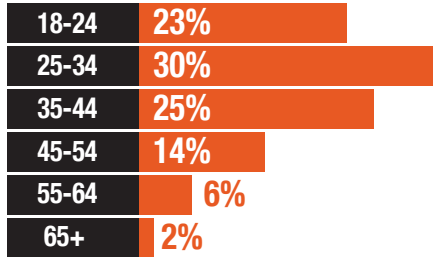


96.3 The Block LISTENER SNAPSHOT

Over

30K Adults 18+ listen to 96.3 The Block for an average of 6 1/4 hours each week!

Listener Age Range



56% Female | **Male 44%**

\$459K

in annual retail spending power!



Median Age

31

TOP FEATURES

- Hip Hop and R&B with Steve Harvey in the morning!
- A new radio station to reach the African-American audience.
- It's all about the music.
- A community connection.

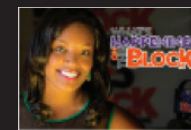
96.3 The Block Weekday Lineup



The Breakfast Club
Mon-Fri
5:30am-6am



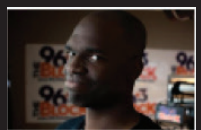
Steve Harvey Morning Show
Mon-Fri
6am-10am



What's Happening on The Block Hosted by Miranda
Sunday 6am-7am



Gospel On The Block
Sunday
7am-Noon



The Unsigned Grind
Sunday
10pm-Midnight

Sundays On The Block

Website: 963TheBlock.com

Facebook: facebook.com/963TheBlock

Twitter: [#963TheBlock](https://twitter.com/963TheBlock)

Instagram: [963TheBlock](https://www.instagram.com/963TheBlock)